

Ecological Monitoring System Australia

Installing the Monitor PWA on an Android tablet


Overview

Monitor is a Progressive Web App (PWA) which has been developed for use with Chrome. It is possible to access and use Monitor within a Google Chrome window, however for the best experience we recommend installing Monitor on your Android device. Depending on the device that you are using, the installation process may vary slightly. These instructions will cover most installation scenarios for installing the Monitor PWA on a tablet.

Equipment

- Android tablet
- Strong internet connection

Installing the Monitor PWA

1. Open Google Chrome  on your tablet and navigate to the Monitor webpage
 - Monitor staging: <https://staging.app.monitor.tern.org.au/projects>
2. Depending on the model of your device, and the version of chrome that you are running, you may notice some slight differences in the installation process.
3. When viewing the login page of Monitor, tap the 3 vertical dots in the top right of the screen. Do not use the 'open PWA' or 'Install PWA' button below the login button'
4. Look down the list until you see either 'install' or 'Add to home screen'
5. If you select 'add to home screen' you will be presented with 2 options;
 - a. 'install'
 - b. 'create shortcut'
6. Choose the 'install' option. The 'create shortcut' will only add a link to the browser version and will not install the PWA on your device.
7. Follow the prompts to install and add Monitor to your home screen.

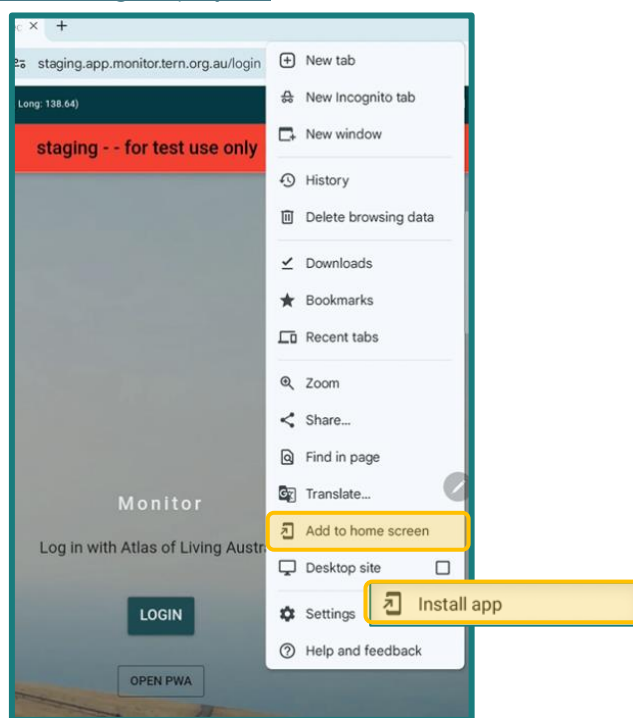


Figure 1: Screenshot of Monitor with 2 button variations for installation of the PWA highlighted in yellow

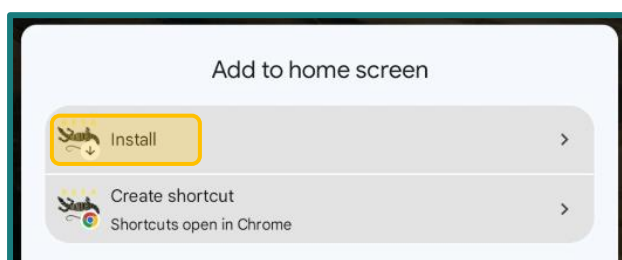


Figure 2: Screenshot of monitor app showing an installation prompt

8. Check that monitor has correctly installed by opening the PWA and checking that there is not a search bar at the top of the page. If a search bar is visible at the top of the screen then you are accessing the browser version of Monitor. Please go back to step 2.

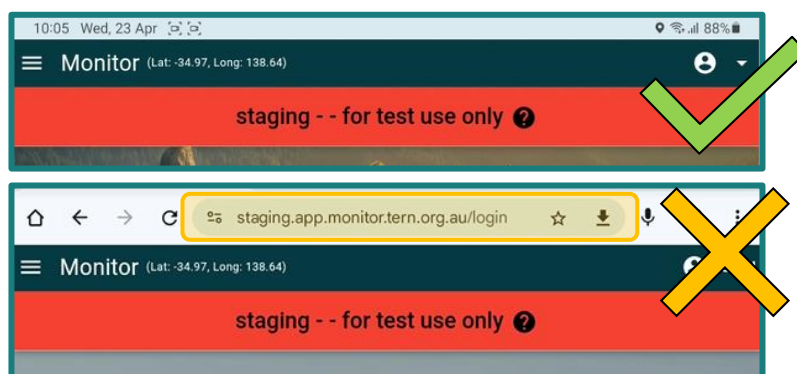


Figure 3: Screenshot of the Monitor PWA (top) with no search bar, and of the Monitor browser window (bottom) with search bar highlighted in yellow

9. You may now log in to the monitor PWA using your ALA account details.

Note: the installed Monitor PWA will share data with google chrome. If you clear your browsing data on google then any collections that are ongoing or awaiting syncing will be cleared and unable to be retrieved.

10. To receive important information about App updates and more, please allow Monitor to send notifications.
11. When opening the app in the future, always update the app when prompted to ensure you are using the latest version of Monitor.

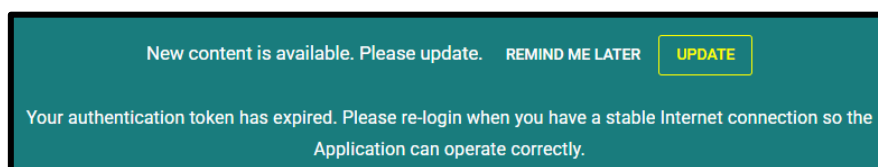


Figure 4: Screenshot of prompt to update the app and notification requesting that the user log out and back in.